

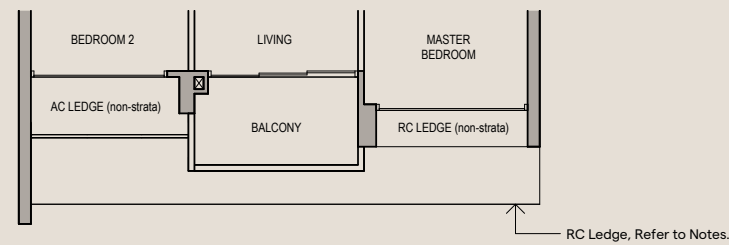
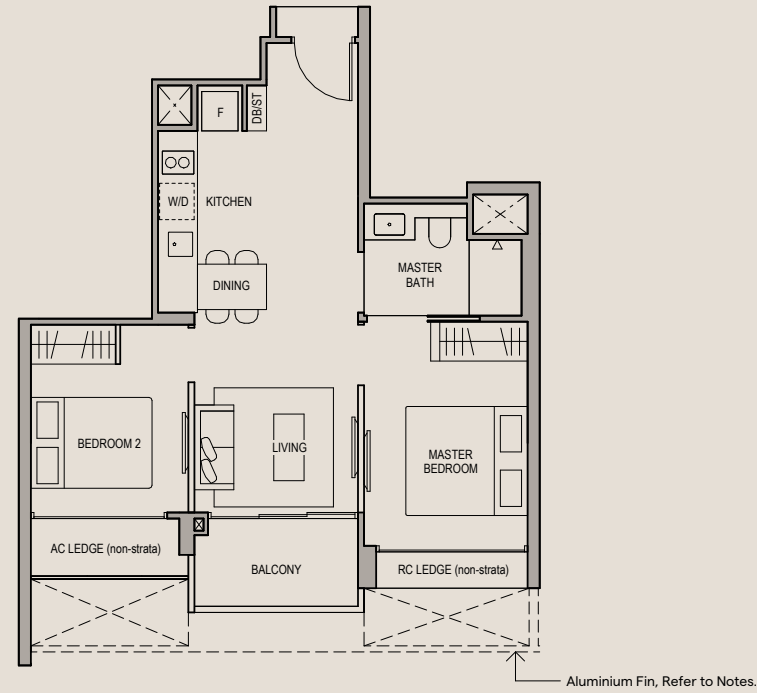
2 BEDROOM

TYPE B1

53 SQM (570 SQFT)

BLOCK 61
#03-03 TO #22-03

BLOCK 65
#03-14* TO #20-14*



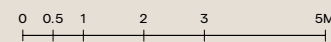
LEGEND

F FRIDGE W/D WASHER CUM DRYER AC AIR-CONDITIONER RC REINFORCE CONCRETE
HS HOUSEHOLD SHELTER DB DISTRIBUTION BOARD ST STORE

ALUMINIUM FIN APPLICABLE TO:
#04-03, #04-14*, #06-03, #06-14*, #08-03, #08-14*, #10-03, #10-14*, #12-03, #12-14*, #14-03, #14-14*, #16-03, #16-14*, #18-03, #18-14*, #20-03, #20-14*, #22-03

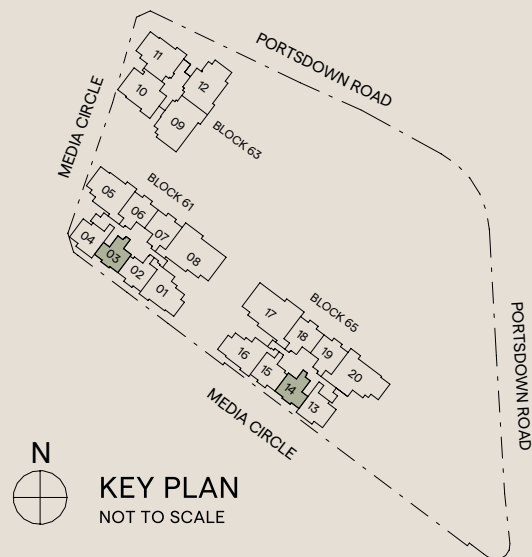
RC LEDGE APPLICABLE TO:
#03-03, #03-14*

*DENOTES MIRRORED UNITS



SCALE

DISCLAIMER : Area includes balcony where applicable, and excludes among others, the Air-Conditioner (AC) ledge, airwell, Reinforced Concrete (RC) Ledge and Services Voids. Please refer to the key plan for orientation. All floor plans are approximate measurements only and are subject to government re-survey. Balconies are not to be enclosed except with a balcony screen which has been approved and complies with the Competent Authority's guidelines. The cost of screen and installation shall be borne by the purchaser. For an illustration of the approved balcony screen, please refer to Annex A of this brochure.



KEY PLAN
NOT TO SCALE

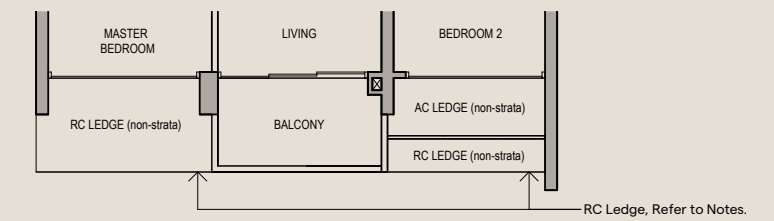
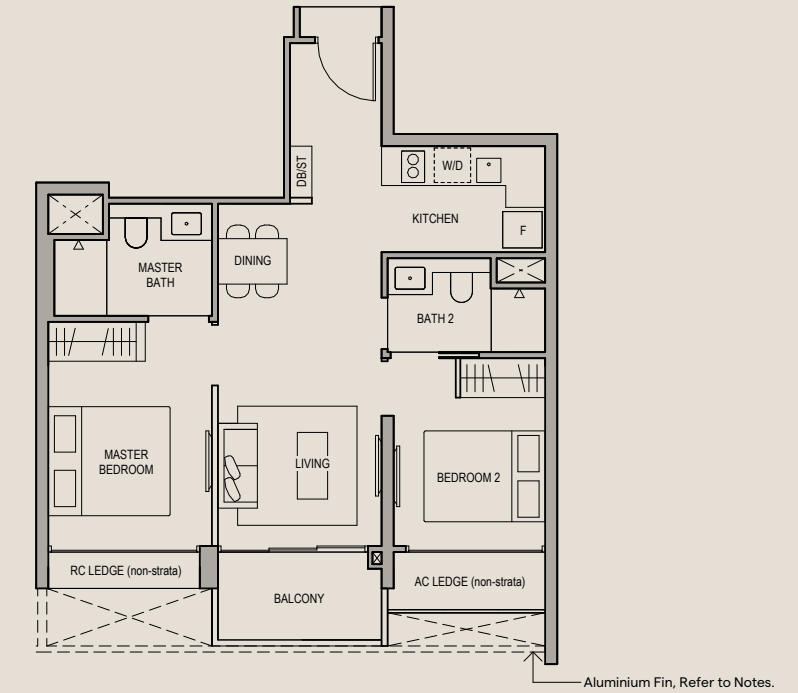
2 BEDROOM PREMIUM

TYPE B2

60 SQM (646 SQFT)

BLOCK 61
#03-02 TO #22-02

BLOCK 65
#03-15* TO #20-15*



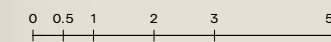
LEGEND

F FRIDGE W/D WASHER CUM DRYER AC AIR-CONDITIONER RC REINFORCE CONCRETE
HS HOUSEHOLD SHELTER DB DISTRIBUTION BOARD ST STORE

ALUMINIUM FIN APPLICABLE TO:
#04-02, #04-15*, #06-02, #06-15*, #08-02, #08-15*, #10-02, #10-15*, #12-02, #12-15*, #14-02, #14-15*, #16-02, #16-15*, #18-02, #18-15*, #20-02, #20-15*, #22-02

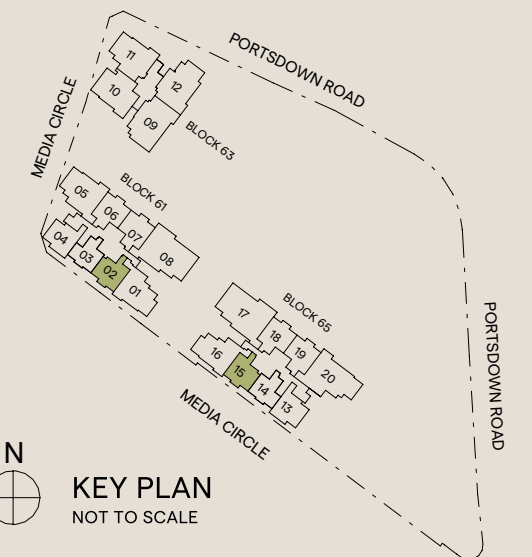
RC LEDGE APPLICABLE TO:
#03-02, #03-15*

*DENOTES MIRRORED UNITS



SCALE

DISCLAIMER : Area includes balcony where applicable, and excludes among others, the Air-Conditioner (AC) ledge, airwell, Reinforced Concrete (RC) Ledge and Services Voids. Please refer to the key plan for orientation. All floor plans are approximate measurements only and are subject to government re-survey. Balconies are not to be enclosed except with a balcony screen which has been approved and complies with the Competent Authority's guidelines. The cost of screen and installation shall be borne by the purchaser. For an illustration of the approved balcony screen, please refer to Annex A of this brochure.



KEY PLAN
NOT TO SCALE

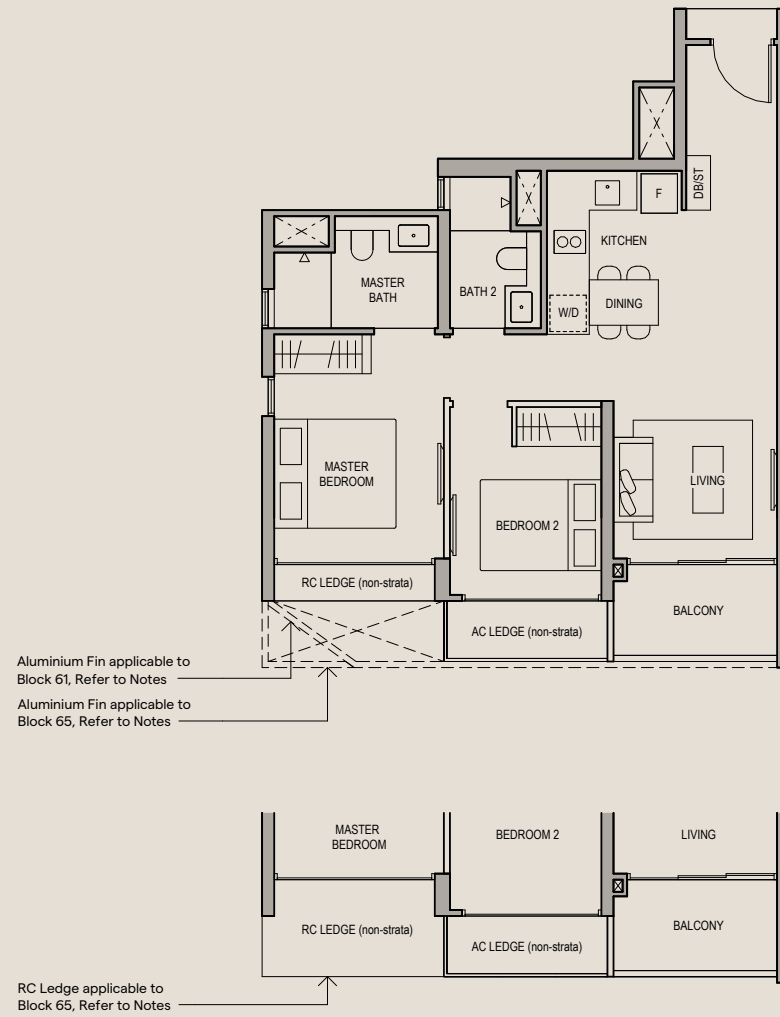
2 BEDROOM PREMIUM

TYPE B3

63 SQM (678 SQFT)

BLOCK 61
#03-04 TO #22-04

BLOCK 65
#03-13* TO #20-13*



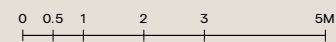
LEGEND

F FRIDGE W/D WASHER CUM DRYER AC AIR-CONDITIONER RC REINFORCE CONCRETE
HS HOUSEHOLD SHELTER DB DISTRIBUTION BOARD ST STORE

ALUMINIUM FIN APPLICABLE TO:
BLOCK 61: #04-04, #06-04, #08-04, #10-04, #12-04, #14-04, #16-04, #18-04, #20-04, #22-04
BLOCK 65: #04-13*, #06-13*, #08-13*, #10-13*, #12-13*, #14-13*, #16-13*, #18-13*, #20-13*

RC LEDGE APPLICABLE TO:
BLOCK 65: #03-13*

*DENOTES MIRRORED UNITS



SCALE

DISCLAIMER : Area includes balcony where applicable, and excludes among others, the Air-Conditioner (AC) ledge, airwell, Reinforced Concrete (RC) Ledge and Services Voids. Please refer to the key plan for orientation. All floor plans are approximate measurements only and are subject to government re-survey. Balconies are not to be enclosed except with a balcony screen which has been approved and complies with the Competent Authority's guidelines. The cost of screen and installation shall be borne by the purchaser. For an illustration of the approved balcony screen, please refer to Annex A of this brochure.



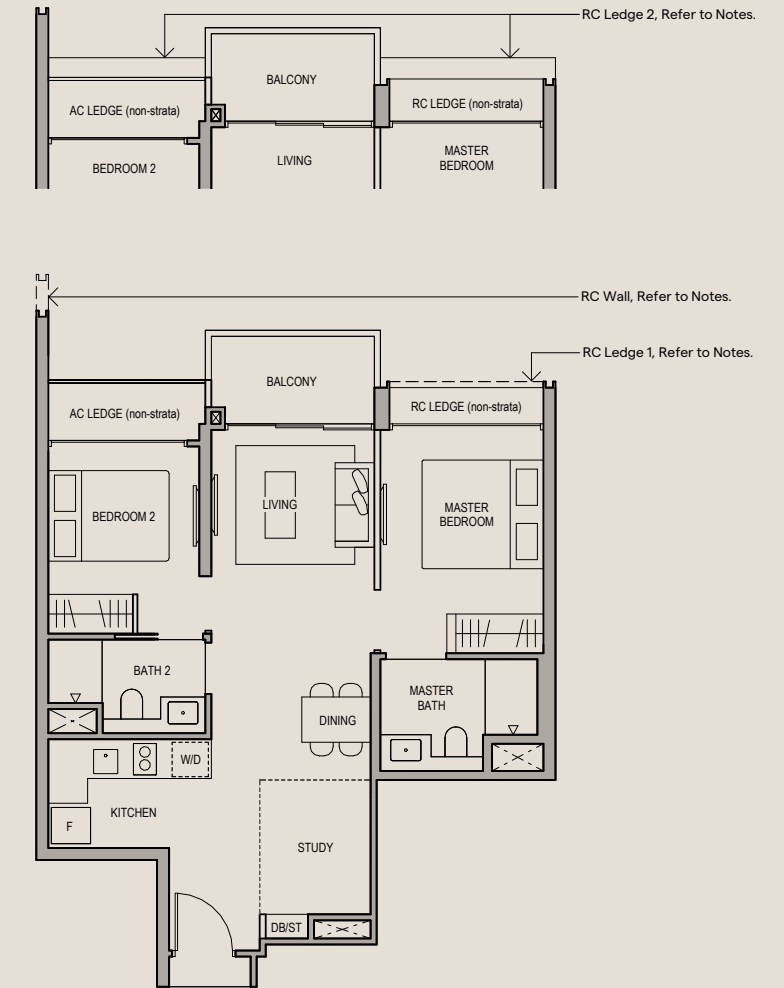
2 BEDROOM PREMIUM + STUDY

TYPE B4

64 SQM (689 SQFT)

BLOCK 61
#03-06 TO #22-06,
#03-07* TO #22-07*

BLOCK 65
#03-18 TO #20-18,
#03-19* TO #20-19*



LEGEND

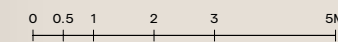
F FRIDGE W/D WASHER CUM DRYER AC AIR-CONDITIONER RC REINFORCE CONCRETE
HS HOUSEHOLD SHELTER DB DISTRIBUTION BOARD ST STORE

RC LEDGE 1 APPLICABLE TO:
#03-06, #03-07*, #03-18, #03-19*, #05-06, #05-07*, #05-18, #05-19*, #07-06, #07-07*, #07-18, #07-19*, #09-06, #09-07*, #09-18, #09-19*, #11-06, #11-07*, #11-18, #11-19*, #13-06, #13-07*, #13-18, #13-19*, #15-06, #15-07*, #15-18, #15-19*, #17-06, #17-07*, #17-18, #17-19*, #19-06, #19-07*, #19-18, #19-19*, #21-06, #21-07*

RC LEDGE 2 APPLICABLE TO:
#03-06, #03-07*, #03-18, #03-19*

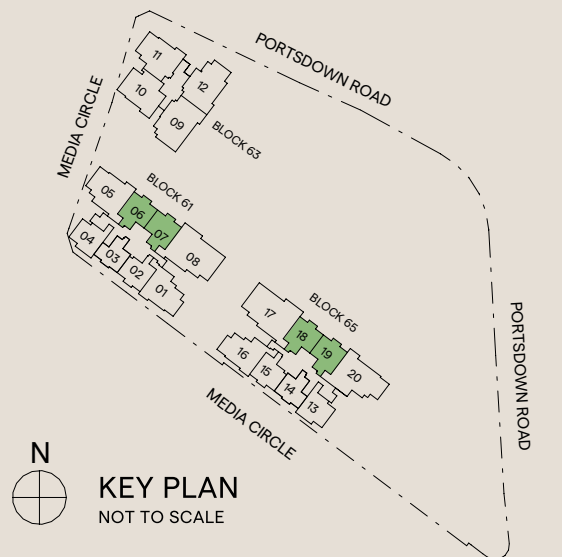
RC WALL APPLICABLE TO:
#03-07* TO #22-07*, #03-18 TO #20-18

*DENOTES MIRRORED UNITS



SCALE

DISCLAIMER : Area includes balcony where applicable, and excludes among others, the Air-Conditioner (AC) ledge, airwell, Reinforced Concrete (RC) Ledge and Services Voids. Please refer to the key plan for orientation. All floor plans are approximate measurements only and are subject to government re-survey. Balconies are not to be enclosed except with a balcony screen which has been approved and complies with the Competent Authority's guidelines. The cost of screen and installation shall be borne by the purchaser. For an illustration of the approved balcony screen, please refer to Annex A of this brochure.



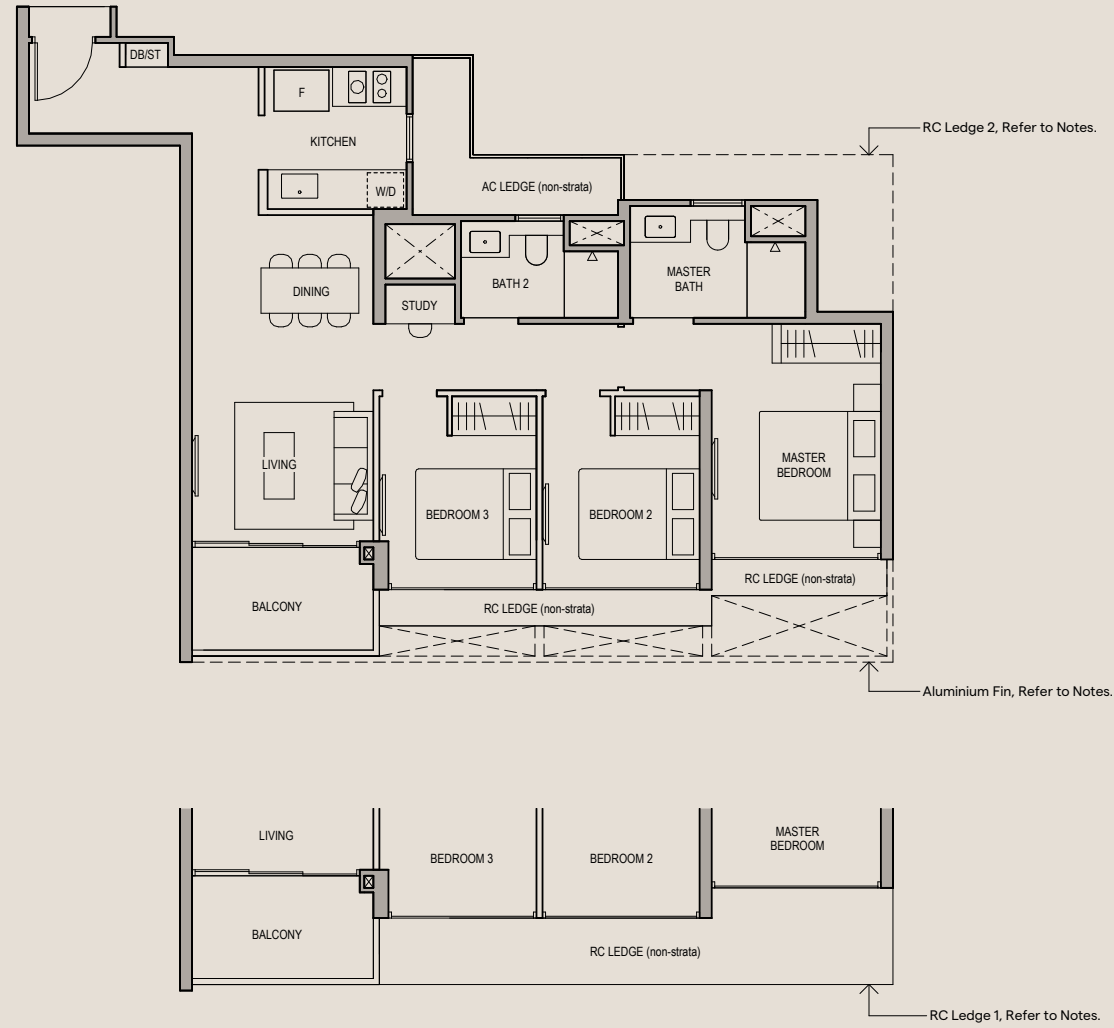
3 BEDROOM + STUDY

TYPE C1

84 SQM (904 SQFT)

BLOCK 61
#03-01 TO #22-01

BLOCK 65
#03-16* TO #20-16*



LEGEND

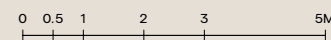
F FRIDGE W/D WASHER CUM DRYER AC AIR-CONDITIONER RC REINFORCE CONCRETE
HS HOUSEHOLD SHELTER DB DISTRIBUTION BOARD ST STORE

ALUMINIUM FIN APPLICABLE TO:
#04-01, #04-16*, #06-01, #06-16*, #08-01, #08-16*, #10-01, #10-16*, #12-01, #12-16*,
#14-01, #14-16*, #16-01, #16-16*, #18-01, #18-16*, #20-01, #20-16*, #22-01

RC LEDGE 1 APPLICABLE TO:
#03-01, #03-16*

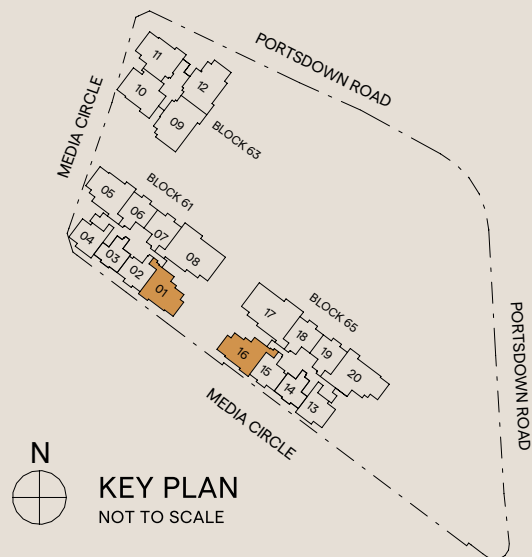
RC LEDGE 2 APPLICABLE TO:
#03-01

*DENOTES MIRRORED UNITS



SCALE

DISCLAIMER : Area includes balcony where applicable, and excludes among others, the Air-Conditioner (AC) ledge, airwell, Reinforced Concrete (RC) Ledge and Services Voids. Please refer to the key plan for orientation. All floor plans are approximate measurements only and are subject to government re-survey. Balconies are not to be enclosed except with a balcony screen which has been approved and complies with the Competent Authority's guidelines. The cost of screen and installation shall be borne by the purchaser. For an illustration of the approved balcony screen, please refer to Annex A of this brochure.



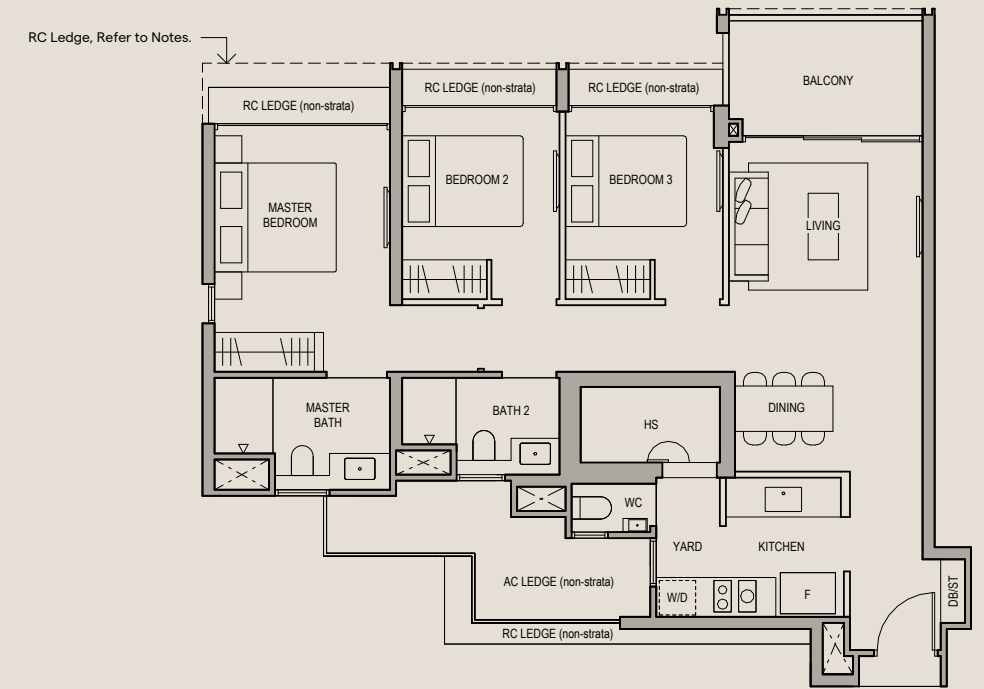
KEY PLAN
NOT TO SCALE

3 BEDROOM PREMIUM

TYPE C2

91 SQM (980 SQFT)

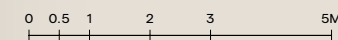
BLOCK 61
#04-05 TO #22-05



LEGEND

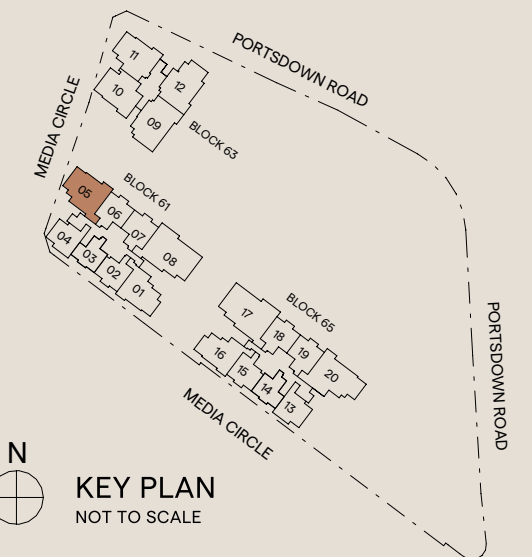
F FRIDGE W/D WASHER CUM DRYER AC AIR-CONDITIONER RC REINFORCE CONCRETE
HS HOUSEHOLD SHELTER DB DISTRIBUTION BOARD ST STORE

RC LEDGE APPLICABLE TO:
#05-05, #07-05, #09-05, #11-05, #13-05, #15-05, #17-05, #19-05, #21-05



SCALE

DISCLAIMER : Area includes balcony where applicable, and excludes among others, the Air-Conditioner (AC) ledge, airwell, Reinforced Concrete (RC) Ledge and Services Voids. Please refer to the key plan for orientation. All floor plans are approximate measurements only and are subject to government re-survey. Balconies are not to be enclosed except with a balcony screen which has been approved and complies with the Competent Authority's guidelines. The cost of screen and installation shall be borne by the purchaser. For an illustration of the approved balcony screen, please refer to Annex A of this brochure.



KEY PLAN
NOT TO SCALE

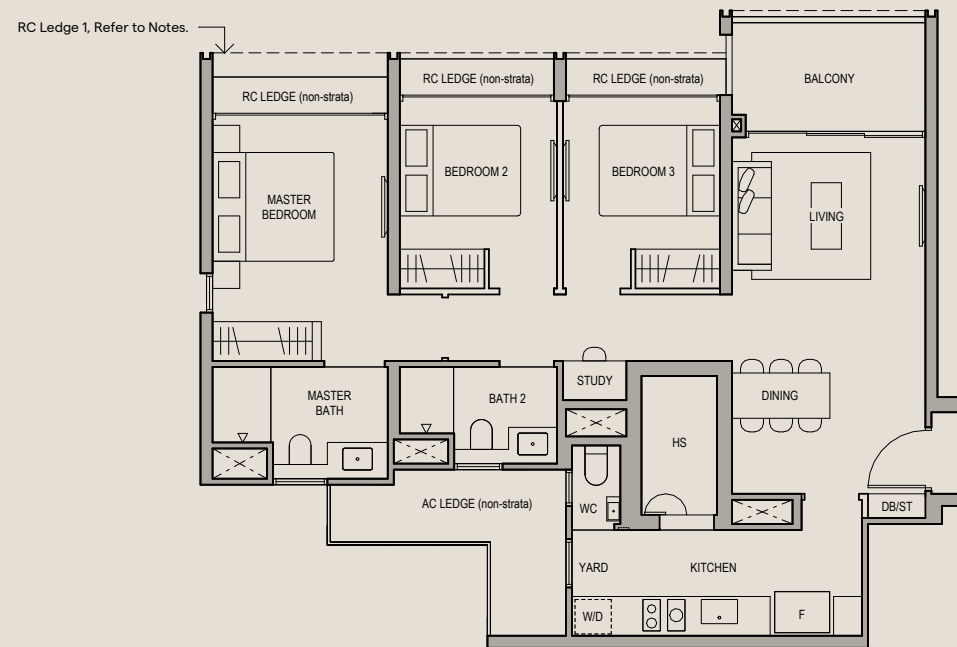
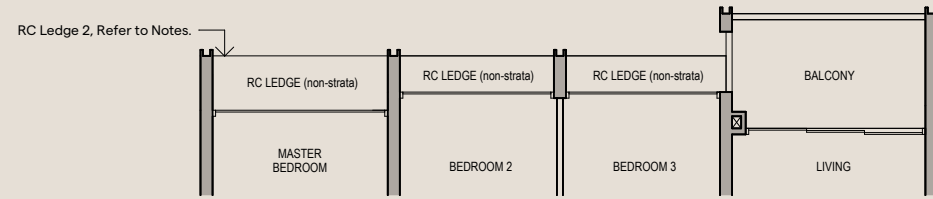
3 BEDROOM PREMIUM + STUDY

TYPE C3

91 SQM (980 SQFT)

BLOCK 63

#03-11 TO #14-11

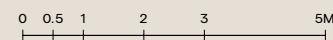


LEGEND

F FRIDGE W/D WASHER CUM DRYER AC AIR-CONDITIONER RC REINFORCE CONCRETE
 HS HOUSEHOLD SHELTER DB DISTRIBUTION BOARD ST STORE

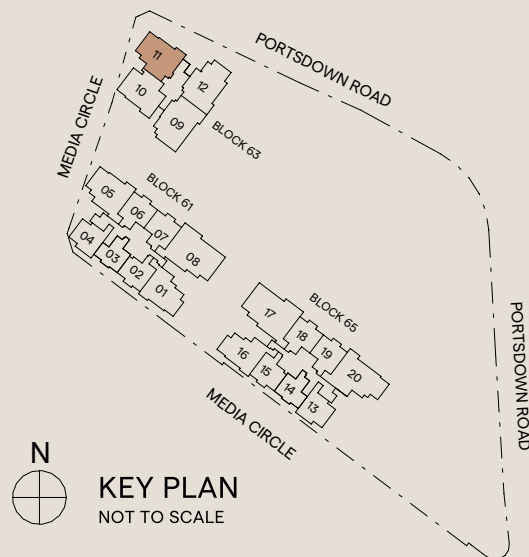
RC LEDGE 1 APPLICABLE TO:
 #05-11, #07-11, #09-11, #11-11, #13-11

RC LEDGE 2 APPLICABLE TO:
 #03-11



SCALE

DISCLAIMER : Area includes balcony where applicable, and excludes among others, the Air-Conditioner (AC) ledge, airwell, Reinforced Concrete (RC) Ledge and Services Voids. Please refer to the key plan for orientation. All floor plans are approximate measurements only and are subject to government re-survey. Balconies are not to be enclosed except with a balcony screen which has been approved and complies with the Competent Authority's guidelines. The cost of screen and installation shall be borne by the purchaser. For an illustration of the approved balcony screen, please refer to Annex A of this brochure.



KEY PLAN
 NOT TO SCALE

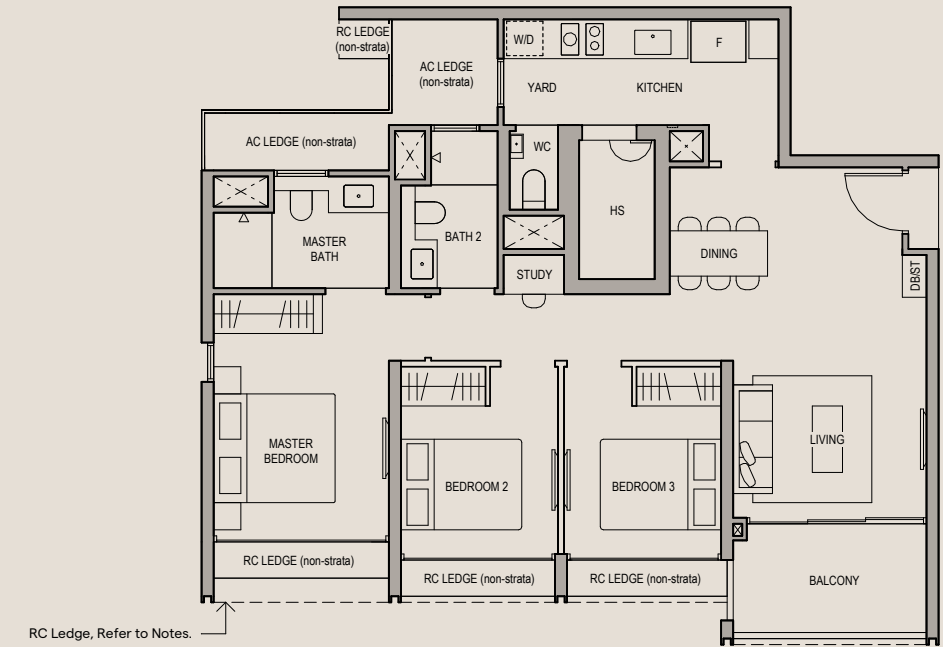
3 BEDROOM PREMIUM + STUDY

TYPE C4

92 SQM (990 SQFT)

BLOCK 63

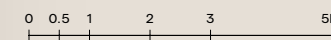
#04-10 TO #14-10



LEGEND

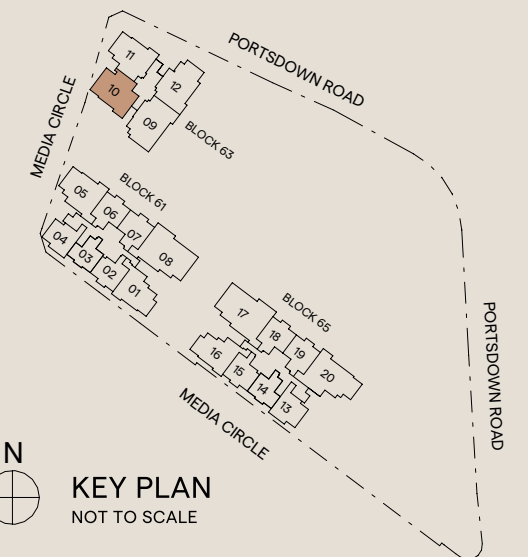
F FRIDGE W/D WASHER CUM DRYER AC AIR-CONDITIONER RC REINFORCE CONCRETE
 HS HOUSEHOLD SHELTER DB DISTRIBUTION BOARD ST STORE

RC LEDGE APPLICABLE TO:
 #05-10, #07-10, #09-10, #11-10, #13-10



SCALE

DISCLAIMER : Area includes balcony where applicable, and excludes among others, the Air-Conditioner (AC) ledge, airwell, Reinforced Concrete (RC) Ledge and Services Voids. Please refer to the key plan for orientation. All floor plans are approximate measurements only and are subject to government re-survey. Balconies are not to be enclosed except with a balcony screen which has been approved and complies with the Competent Authority's guidelines. The cost of screen and installation shall be borne by the purchaser. For an illustration of the approved balcony screen, please refer to Annex A of this brochure.



KEY PLAN
 NOT TO SCALE

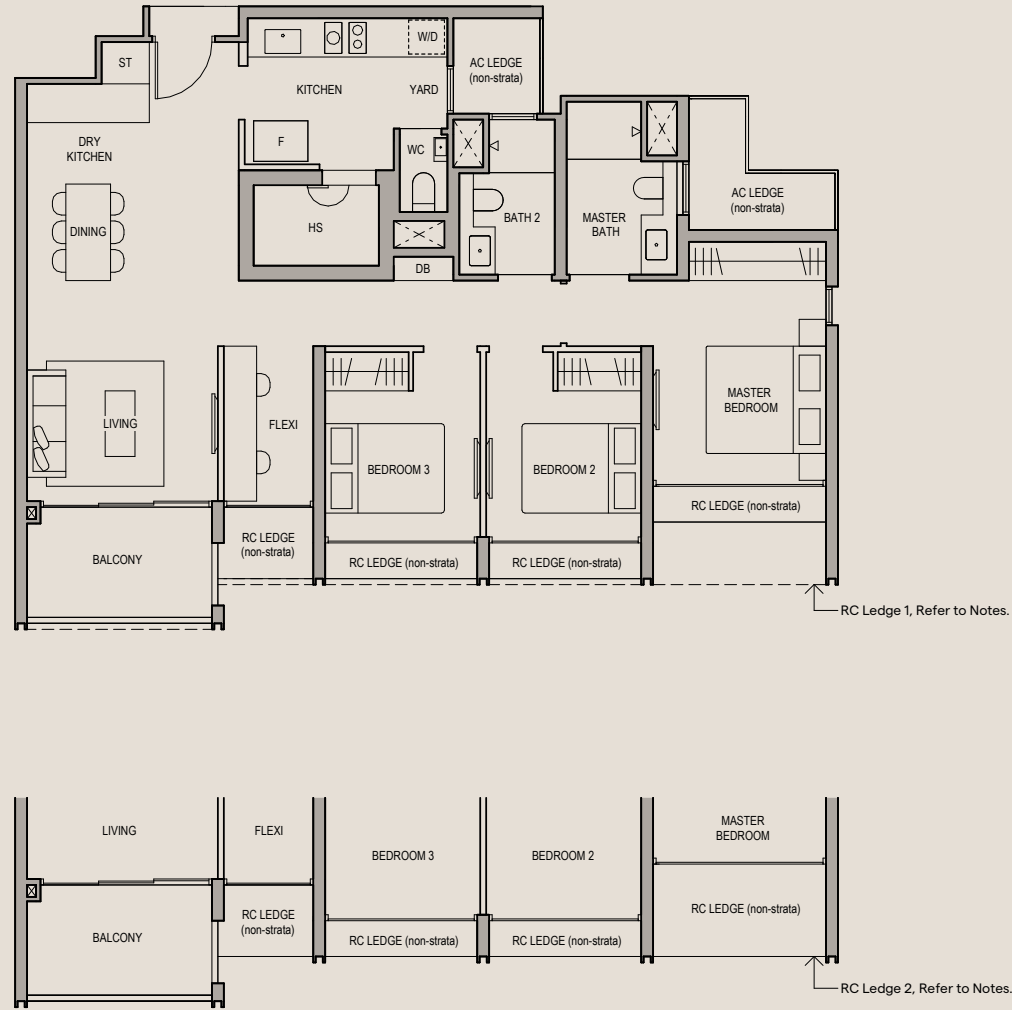
3 BEDROOM PREMIUM + FLEXI

TYPE C5

102 SQM (1098 SQFT)

BLOCK 63

#03-12 TO #14-12

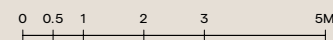


LEGEND

F FRIDGE W/D WASHER CUM DRYER AC AIR-CONDITIONER RC REINFORCE CONCRETE
 HS HOUSEHOLD SHELTER DB DISTRIBUTION BOARD ST STORE

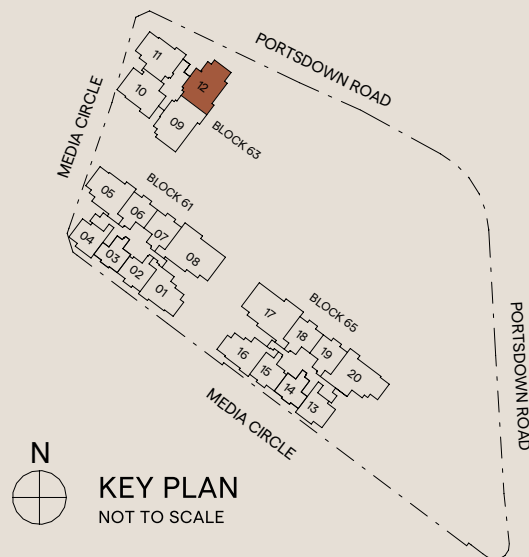
RC LEDGE 1 APPLICABLE TO:
 #05-12, #07-12, #09-12, #11-12, #13-12

RC LEDGE 2 APPLICABLE TO:
 #03-11



SCALE

DISCLAIMER : Area includes balcony where applicable, and excludes among others, the Air-Conditioner (AC) ledge, airwell, Reinforced Concrete (RC) Ledge and Services Voids. Please refer to the key plan for orientation. All floor plans are approximate measurements only and are subject to government re-survey. Balconies are not to be enclosed except with a balcony screen which has been approved and complies with the Competent Authority's guidelines. The cost of screen and installation shall be borne by the purchaser. For an illustration of the approved balcony screen, please refer to Annex A of this brochure.



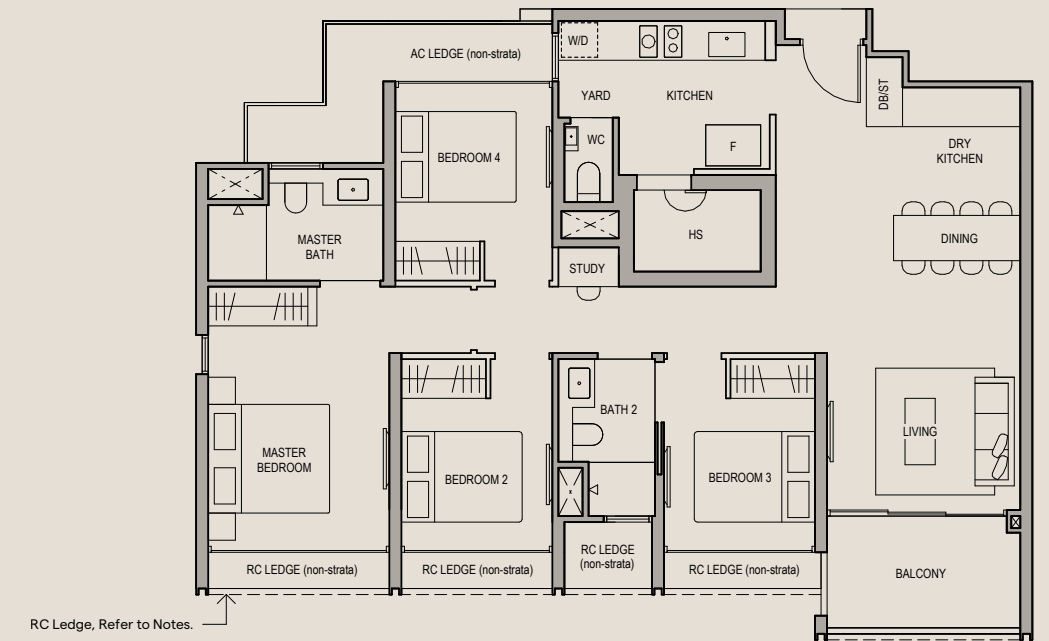
4 BEDROOM PREMIUM + STUDY

TYPE D1

109 SQM (1173 SQFT)

BLOCK 63

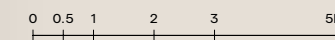
#03-09 TO #14-09



LEGEND

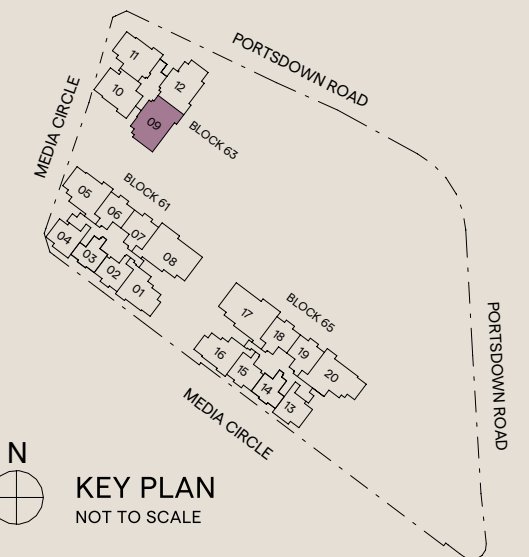
F FRIDGE W/D WASHER CUM DRYER AC AIR-CONDITIONER RC REINFORCE CONCRETE
 HS HOUSEHOLD SHELTER DB DISTRIBUTION BOARD ST STORE

RC LEDGE APPLICABLE TO:
 #05-09, #07-09, #09-09, #11-09, #13-09



SCALE

DISCLAIMER : Area includes balcony where applicable, and excludes among others, the Air-Conditioner (AC) ledge, airwell, Reinforced Concrete (RC) Ledge and Services Voids. Please refer to the key plan for orientation. All floor plans are approximate measurements only and are subject to government re-survey. Balconies are not to be enclosed except with a balcony screen which has been approved and complies with the Competent Authority's guidelines. The cost of screen and installation shall be borne by the purchaser. For an illustration of the approved balcony screen, please refer to Annex A of this brochure.



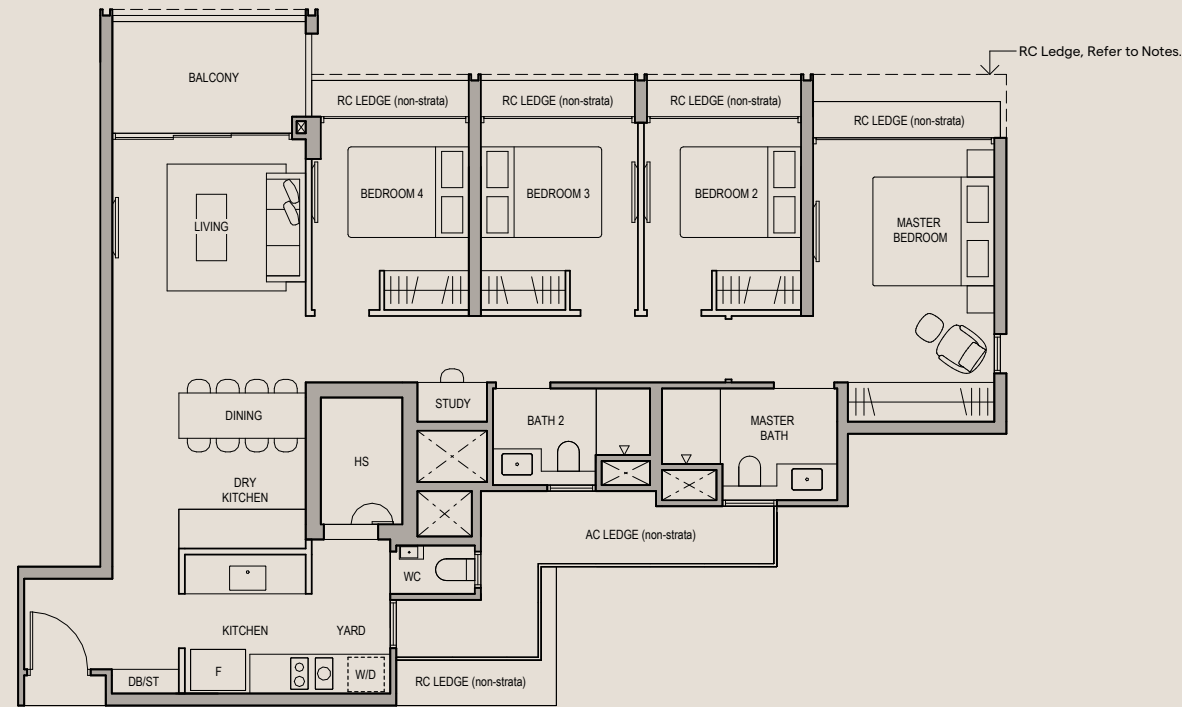
4 BEDROOM PREMIUM + STUDY

TYPE D2

112 SQM (1206 SQFT)

BLOCK 65

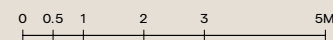
#03-20 TO #20-20



LEGEND

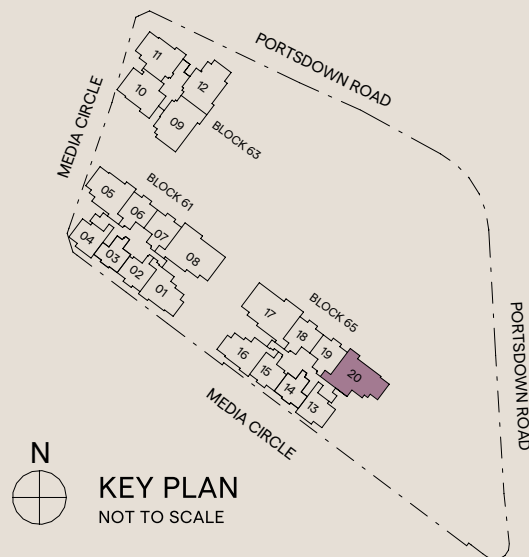
F FRIDGE W/D WASHER CUM DRYER AC AIR-CONDITIONER RC REINFORCE CONCRETE
 HS HOUSEHOLD SHELTER DB DISTRIBUTION BOARD ST STORE

RC LEDGE APPLICABLE TO:
 #05-20, #07-20, #09-20, #11-20, #13-20, #15-20, #17-20, #19-20



SCALE

DISCLAIMER : Area includes balcony where applicable, and excludes among others, the Air-Conditioner (AC) ledge, airwell, Reinforced Concrete (RC) Ledge and Services Voids. Please refer to the key plan for orientation. All floor plans are approximate measurements only and are subject to government re-survey. Balconies are not to be enclosed except with a balcony screen which has been approved and complies with the Competent Authority's guidelines. The cost of screen and installation shall be borne by the purchaser. For an illustration of the approved balcony screen, please refer to Annex A of this brochure.



KEY PLAN
 NOT TO SCALE

4 BEDROOM SUITE + FLEXI

TYPE D3

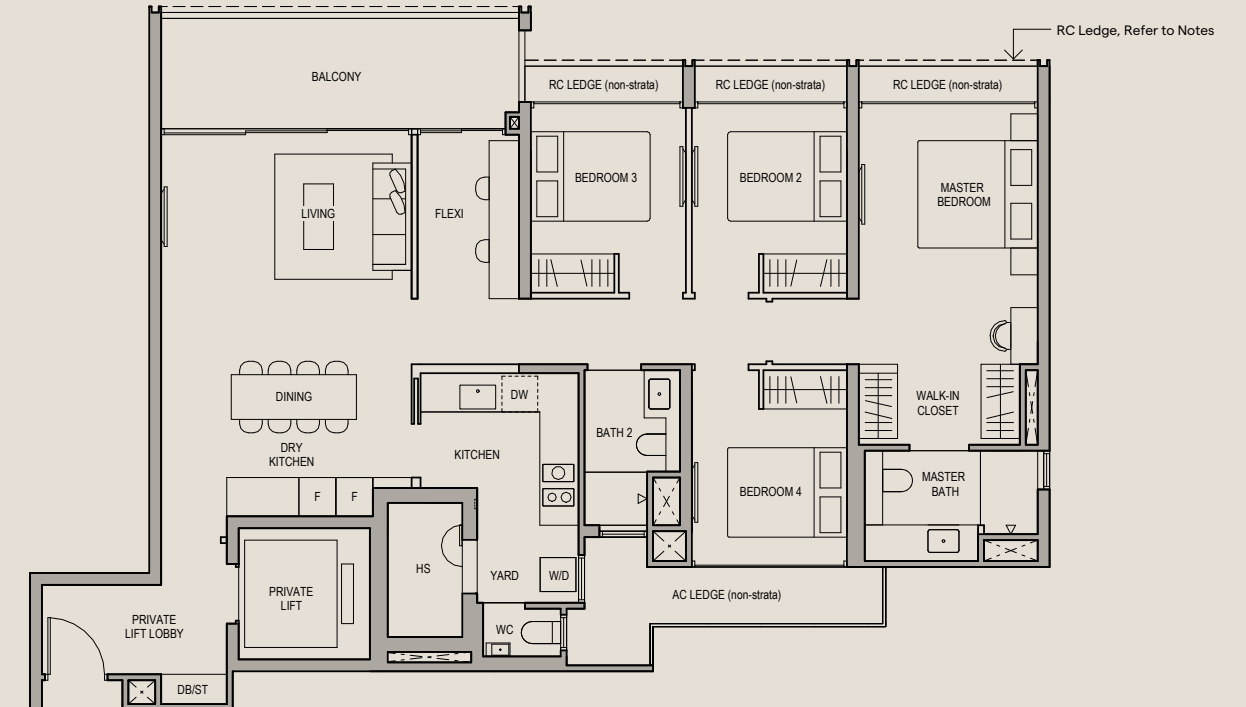
132 SQM (1421 SQFT)

BLOCK 61

#03-08 TO #22-08

BLOCK 65

#03-17* TO #20-17*

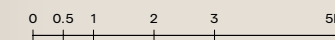


LEGEND

F FRIDGE W/D WASHER CUM DRYER AC AIR-CONDITIONER RC REINFORCE CONCRETE
 HS HOUSEHOLD SHELTER DB DISTRIBUTION BOARD ST STORE DW DISHWASHER

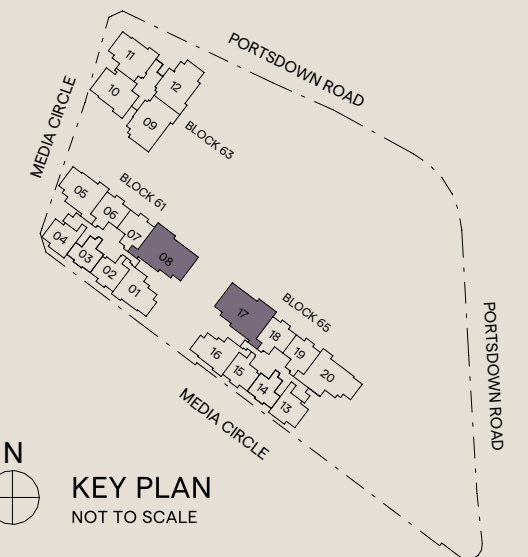
RC LEDGE APPLICABLE TO:
 #05-08, #05-17*, #07-08, #07-17*, #09-08, #09-17*, #11-08, #11-17*, #13-08, #13-17*, #15-08, #15-17*, #17-08, #17-17*, #19-08, #19-17*, #21-08

*DENOTES MIRRORED UNITS



SCALE

DISCLAIMER : Area includes balcony where applicable, and excludes among others, the Air-Conditioner (AC) ledge, airwell, Reinforced Concrete (RC) Ledge and Services Voids. Please refer to the key plan for orientation. All floor plans are approximate measurements only and are subject to government re-survey. Balconies are not to be enclosed except with a balcony screen which has been approved and complies with the Competent Authority's guidelines. The cost of screen and installation shall be borne by the purchaser. For an illustration of the approved balcony screen, please refer to Annex A of this brochure.



KEY PLAN
 NOT TO SCALE